



NON-SELECTIVE
HERBICIDE



INSECTICIDE



FUNGICIDE



SPECIALTY



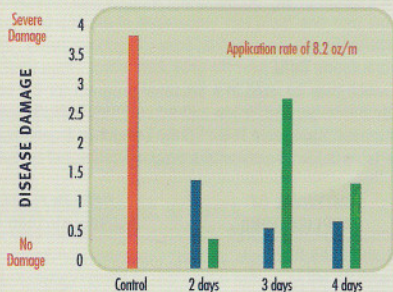
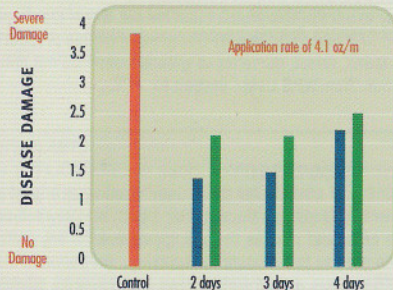
SELECTIVE
HERBICIDE



PROFILE

Magellan systemic fungicide prevents pythium invasion with a proven mode of action that attacks the fungi directly and stimulates the plant's defenses against the disease organisms.

BENTGRASS TRIALS CONDUCTED AT UNIVERSITY OF ILLINOIS



Control Magellan Aliette

Aliette is a registered trademark of Aventis.

Magellan®

Systemic Fungicide

Active Ingredients:

Mono- and dibasic sodium, potassium and ammonium phosphites

ADVANTAGE

Magellan provides both preventative and curative treatments for pythium and yellow tuft diseases in a clear, odorless liquid formulation. Combining easily with other fungicides, Magellan is an essential component of any broad-spectrum fungicidal program.

MAGELLAN FEATURES AND BENEFITS

- Provides prevention and control of Downy Mildew, Pythium and Phytophthora
- Clear, virtually odorless
- Neutral pH – no buffer necessary
- Compatible with other fungicides for broad-spectrum control
- Tank mix compatible with insecticides and fertilizers
- No known resistance to active ingredient
- Provides control of bacterial diseases in some ornamentals

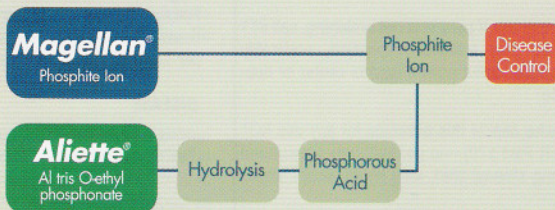
MAGELLAN PRIMARY USE

- Golf Courses
- Sod Farms
- Lawns
- Ornamentals
- Municipal Turf Areas
- Bedding Plants

MODE OF ACTION

The active ingredients of Magellan are phosphorous acids that directly inhibit fungal growth by disrupting the phosphorus metabolism within the fungi. This indirectly triggers the plant's own immune defenses to the fungi through cytological action.

HOW DOES MAGELLAN ACHIEVE A HIGH DEGREE OF CONTROL?



This information is for promotional purposes only. Space considerations may require information to be omitted. Always refer to actual package for complete label verbiage.

Riverdale

A Nufarm Company

Riverdale
A Nufarm Company

 **Magellan**
Systemic Fungicide

**FOR THE PREVENTION AND CONTROL OF TURF DISEASES AND
THE DISEASES OF ORNAMENTALS AND BEDDING PLANTS.**

ACTIVE INGREDIENT:

Mono- and dibasic sodium, potassium, and ammonium phosphites* 53.6%
INERT INGREDIENTS: 46.4%
TOTAL 100.0%

*Contains 6.69 pounds/gallon of the active ingredients, mono- and dibasic sodium, potassium, and ammonium salts of phosphorous acid, equivalent to 4.32 pounds phosphorous acid per gallon (35.6 weight%).

Magellan is a trademark and Riverdale is a registered trademark of Riverdale Chemical Company

KEEP OUT OF REACH OF CHILDREN

CAUTION

**SEE INSIDE BOOKLET FOR ADDITIONAL PRECAUTIONARY
STATEMENTS AND FIRST AID STATEMENT**

EPA REG. NO. 228-387

NET CONTENTS:

EPA EST. NO. 70815-GA-1

**MANUFACTURED BY
RIVERDALE CHEMICAL COMPANY
BURR RIDGE, ILLINOIS 60527-0866**

**PRECAUTIONARY STATEMENTS
HAZARDS TO HUMANS AND DOMESTIC ANIMALS
CAUTION**

Causes moderate eye injury. Avoid breathing vapor or spray mist. Harmful if swallowed or absorbed through the skin. Avoid contact with eyes, skin and clothing.

FIRST AID STATEMENT

IF IN EYES: Hold eye open and rinse slowly and gently with water for 15 to 20 minutes. Remove contact lenses, if present, after the first 5 minutes, then continue rinsing eye. Call a poison control center or doctor for treatment advice.

IF ON SKIN OR CLOTHING: Take off contaminated clothing. Rinse skin immediately with plenty of water for 15 to 20 minutes. Call a poison control center or doctor for treatment advice.

IF INHALED: Remove individual to fresh air. If person is not breathing, call 911 or an ambulance, then give artificial respiration, preferably mouth-to-mouth if possible. Call a poison control center or doctor for treatment advice.

NON-WPS USES: Applicators and other handlers who handle this pesticide for any use NOT covered by the Worker Protection Standard (40 CFR Part 170)—in general, only agricultural plant uses are covered by the WPS—must wear: long-sleeved shirt, long pants, socks, shoes and waterproof gloves.

WPS USES: Personal Protective Equipment(PPE) - Applicators and other handlers who handle this pesticide for any use covered by the worker Protection Standard (40 CFR Part 170)—in general, agricultural plant uses are covered — must wear long-sleeved shirt and long pants, waterproof gloves, shoes plus socks and protective eyewear. Follow manufacturer's instructions for cleaning/maintaining PPE. If no such instructions for washables, use detergent and hot water. Keep and wash PPE separately from other laundry.

ENGINEERING CONTROLS STATEMENTS: When handlers use closed systems, enclosed cabs, or aircraft in a manner that meets the requirements listed in Worker Protection Standard (WPS) for agricultural pesticides [40 CFR 170.240 (d)(4-6)], the handler PPE requirements may be reduced or modified as specified in the WPS.

USER SAFETY RECOMMENDATIONS

USERS SHOULD: Wash hands before eating, drinking, chewing gum, using tobacco, or using the toilet. Remove clothing immediately if pesticide gets inside. Then wash thoroughly and put on clean clothing.

ENVIRONMENTAL HAZARDS

This pesticide is toxic to fish and aquatic organisms. Drift and runoff from treated areas may be hazardous to fish and aquatic organisms in adjacent aquatic sites. Do not apply this product through any type of irrigation system. Do not apply directly to water, or to areas where surface water is present or to intertidal areas below the mean high water mark. Do not contaminate water when disposing of equipment washwaters. Do not apply this product through any type of irrigation system.

DIRECTIONS FOR USE

It is a violation of Federal law to use this product in a manner inconsistent with its labeling. READ ENTIRE LABEL BEFORE USING THIS PRODUCT. USE STRICTLY IN ACCORDANCE WITH LABEL PRECAUTIONARY STATEMENTS AND DIRECTIONS.

Do not apply this product in a way that will contact workers or other persons either directly or through drift. Only protected handlers may be in the area during application. For any requirements specific to your State or Tribe, consult the agency responsible for pesticide regulation.

AGRICULTURAL USE REQUIREMENTS

Use this product only in accordance with its labeling and with the Worker Protection Standard(WPS), 40 CFR part 170. This standard contains requirements for the protection of agricultural workers on farms, forests, nurseries, and greenhouses, and handlers of agricultural pesticides. It contains requirements for training, decontamination, notification, and emergency assistance. It also contains specific instructions and exceptions pertaining to the statements on this label about personal protective equipment(PPE), and restricted-entry interval (REI). The requirements in this box only apply to uses of this product that are covered by the WPS.

Do not enter or allow worker entry into treated areas during the REI of 4 hours.

For early entry to treated areas that is permitted under the WPS and that involves contact with anything that has been treated, such as plants, soil, or water, wear: Coveralls, waterproof gloves, shoes and socks, and protective eyewear.

NON-AGRICULTURAL USE REQUIREMENTS

The requirements in this box apply to uses of this product that are not within the scope of the WPS for agricultural pesticides 40 CFR part 170. The WPS applies when this product is used to produce agricultural plants on farms, forest, nurseries or greenhouses. Do not enter treated area until sprays have dried. See "Non-WPS Uses:" section for PPE.

COMPATIBILITY

To determine the physical compatibility of MAGELLAN for all uses listed on this label with any other product, use a small container to mix a small amount (i.e., 1 pint) of spray solution, containing all ingredients in the same order and ratio as the anticipated use. If any indication of physical incompatibility develop, do not use this mixture for spraying. Indication of incompatibility usually appear within 5 to 15 minutes after mixing. Read and follow all directions and precautions on this label and on the labels of any products for which a tank mixture is being considered.

TURF

Magellan is a systemic fungicide which may be used in a seasonal program for the control of Pythium diseases, such as blight and root rot, and Yellow tuft on common turfgrasses on golf courses, sod farms and other turf areas. Apply as a foliar spray, using 1 to 5 gallons of water per 1000 sq. ft. as indicated in the table below. Apply with a properly calibrated sprayer.

DISEASE	INTERVAL OF APPLICATIONS	RATE IN FL. OZ. MAGELLAN/1000 FT ²
Pythium diseases, Yellow tuft	14 Days	4.1
	21 Days	8.2

Begin preventative applications when conditions first favor disease and repeat at recommended interval. Do not mow and/or water treated areas until foliage is completely dry.

NOTE: Not for this use in California.

TURF TANK MIXTURES

SUMMER STRESS COMPLEX/SUMMER DECLINE: For control of Summer Stress Complex/Summer Decline caused by a complex of Pythium and Rhizoctonia diseases, Magellan can be tank-mixed with the products registered for the control of this disease complex for use on common turfgrasses on golf course, sod farms, industrial or municipal turf areas, and professional applications to residential lawns in accordance with the most restrictive of label limitations and precautions. Do not exceed label dosage rates. This product cannot be mixed with any product containing a label prohibition against such mixing.

Apply as a foliar spray using 1 to 5 gallons of water per 1000 sq. ft. Apply with a properly calibrated sprayer. Begin preventative applications when conditions first favor disease and repeat at recommended interval. Do not mow and/or water treated areas until foliage is completely dry. If a tank-mix with other fungicides is used follow the label directions for the use of that product and apply at the recommended rate for control of the target disease organism.

NOTE: Not for this use in California.

ORNAMENTALS AND BEDDING PLANTS

Use Magellan on ornamentals and bedding plants grown in field nursery, greenhouse, landscaping and conifer nursery situations, for control of diseases caused by Pythium and Phytophthora.

Magellan can also be used on ornamentals for the control of downy mildew and fire blight and for the suppression of bacterial blight caused by certain pathovars of *Xanthomonas campestris*. Applications should be made prior to disease development and should be made in conjunction with good cultural management practices. Use the higher rate when disease pressure is severe. Do not exceed recommended rates or apply more frequently than at specified intervals or plant injury may occur.

NOTE: Not for this use in California.

PLANT TOLERANCE

Plant tolerances to Magellan have been found to be acceptable in the specific genera and species listed on this label. It is not possible to evaluate every species or variety of ornamental plant for its tolerance to Magellan. The user should test for possible phytotoxic responses in other plants on a small area basis using recommended rates prior to commercial rates.

ORNAMENTALS

FOLIAR APPLICATIONS to plants such as Aglaonema, Aphelandra, Azalea, Bougainvillea, Cattleya skinneri, Cissus, Dieffenbachia, Hibiscus, Juniper, Leather-leaf Fern, Pittosporum, Philodendron Spathiphyllum and Taxus media: Mix 2.5 to 5 pints with 100 gallons of water and spray to wet using no more than 400 gallons of spray per acre. Repeat as necessary but do not exceed one application every 30 days.

DRENCH APPLICATIONS to plants such as Aphelandra, Azalea, Boxwood, Cissus, Dieffenbachia, Japanese Holly, Juniper, Monterey Pine, Philodendron, Pieris, Pittosporum, Rhododendron, Schefflera, Spathiphyllum, and Taxus media: Mix 6 to 12 fl. ozs. with 100 gallons of water and apply to 400 sq. ft. (equivalent to 2 pint solution per square feet). Repeat as necessary but do not exceed one application every 30 days.

SOIL INCORPORATION to plants such as Rhododendron, Azalea, or Pieris for control of Phytophthora species only: Mix 8 to 12 fl. ozs. per cubic yard of soil; mix immediately before potting. If conditions are favorable for disease development, applications as a foliar spray or drench should be made as needed but are not to exceed once every 30 days. Use soil incorporation only with well-rooted plants.

BEDDING PLANTS

FOLIAR APPLICATIONS to plants such as Begonia, Pansy, Vinca, Marigold, Zinnia, Petunia, Geranium, and Impatiens: Mix 1.25 to 4 pints with 100 gallons of water and spray to wet using no more than 400 gallons of water per acre. Repeat as necessary but do not exceed one application every fourteen days.

FOR USE ON CONIFERS IN NURSERIES TO PREVENT PHYTOPHTHORA ROOT ROT

DIP TREATMENTS to conifers such as Douglas firs, spruce and pines. Dip transplants in 2.5 pints per 100 gallons to thoroughly wet plant and root mass. Dip immediately before transplanting. When making dip applications, wear chemical/water resistant gloves, goggles or face shield, long pants (coveralls), long-sleeved shirt, shoes and socks.

FOLIAR APPLICATIONS to conifers such as Douglas firs, spruce and pines: Mix 2.5 to 5 pints in 100 gallons of water and spray to wet using no more than 400 gallons of water per acre. Do not exceed more than one application every 30 days.

DOWNY MILDEW CONTROL IN ROSES

FOLIAR APPLICATIONS TO ROSES: field, container, landscape and mini varieties to control downy mildew (*Peronospora sparsa*). Applications should be made in conjunction with a disease sanitation program to reduce the spread of the disease to uninfected plants. Mix 2.5 pints with 100 gallons of water and spray to wet using no more than 400 gallons per acre. Repeat as necessary but do not exceed one application every 7 days.

NOTE: Not for this use in California.

FIRE BLIGHT SUPPRESSION

FOLIAR APPLICATIONS to plants such as Ornamental Pear, Pyracantha and Hawthorne. Applications should be made in conjunction with a strict sanitation program to reduce the spread of the disease to uninfected plants. Mix 2.5 pints in 100 gallons of water and spray to wet using not more than 400 gallons of water per acre. Magellan works solely as a preventative treatment. Begin spray treatments at pre-bloom stage and continue at 7 day intervals until bloom period ends. Do not exceed one application every 7 days.

NOTE: Not for this use in California.

BACTERIAL BLIGHT SUPPRESSION

FOLIAR APPLICATIONS to plants such as English Ivy, Schefflera, Anthurium, Dieffenbachia, Spathiphyllum, Syngonium, and Ficus for the suppression of the *Xanthomonas campestris* pathovars: *Hederae*, *Dieffenbachiae*, *Syngonii*, and *Fici*. Applications should be made in conjunction with a disease sanitation program to reduce the spread of the disease to uninfected plants. Mix 1.9 to 4.1 pints with 100 gallons of water and spray to wet using no more than 400 gallons of spray per acre. Repeat as necessary but do not exceed one application every 7 days.

NOTE: Not for this use in California.

STORAGE AND DISPOSAL

STORAGE: Do not contaminate water, food, or feed by storage or disposal. Store in a cool, dry place.

PESTICIDE DISPOSAL: Pesticide wastes are acutely hazardous. Improper disposal of excess pesticide, spray mixture, or rinsate is a violation of Federal law. If these wastes cannot be disposed of by use according to label instructions, contact your State Pesticide or Environmental Control Agency, or the Hazardous Waste Representative at the nearest Environmental Protection Agency Regional Office for guidance.

CONTAINER DISPOSAL: Triple rinse (or equivalent). Then offer for recycling or reconditioning, or puncture and dispose of in a sanitary landfill, or incinerator, or if allowed by State and Local authorities, by burning. If burned stay out of smoke.

WARRANTY

Riverdale Chemical Company warrants that this fungicide conforms to the chemical description on its label. When used in accordance with label directions under normal conditions, this fungicide is reasonably fit for its intended purposes. Since timing, method of application, weather, plant and soil conditions, mixtures with other chemicals, and factors affecting the use of this product are beyond our control, no warranty is given concerning the use of this product contrary to label directions or under conditions which are abnormal or not reasonably foreseeable. The user assumes all risks of any such use.

RV030402