



BarricorTM SP

- Kills a broad spectrum of pests as listed
- Multiple dose rates can be used to address a variety of situations
- When used as directed will not damage paints, plastics, fabrics or other surfaces where water alone causes no damages
- New formulation technology category
- For use in food handling establishments

ACTIVE INGREDIENT:

Deltamethrin 2.45%

OTHER INGREDIENTS : 97.55%

TOTAL: 100.00%

Contains 0.21 pounds deltamethrin per gallon

EPA Reg. No. 432-1597

See Booklet for Complete Precautionary Statements and Directions for Use.

**KEEP OUT OF
REACH OF
CHILDREN**

For MEDICAL and
TRANSPORTATION

Emergencies ONLY Call
24 Hours A Day
1-800-334-7577

For PRODUCT USE
Information Call
1-800-331-2867

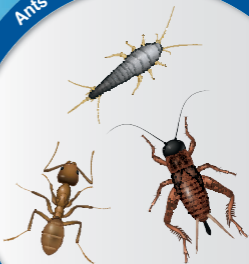
Net Contents

32 Fl. Oz.

SKU# 86230747

86255596C 181119AV2

Ants • Crickets • Silverfish



PRECAUTIONARY STATEMENTS

HAZARDS TO HUMANS AND DOMESTIC ANIMALS

Prolonged or frequently repeated skin contact may cause allergic reactions in some individuals.

ENVIRONMENTAL HAZARDS

This product is extremely toxic to fresh water and estuarine fish and invertebrates. Use with care when applying in areas adjacent to any body of water. To protect the environment, do not allow pesticide to enter or run off into storm drains, drainage ditches, gutters, or surface waters. Applying this product in calm weather when rain is not predicted for the next 24 hours will help to ensure that wind or rain does not blow or wash pesticide off the treatment area. Rinsing application equipment over the treated area will help avoid run off to water bodies or drainage systems.

This pesticide is highly toxic to bees exposed to direct treatment. Do not apply or allow it to drift to crops or weeds on which bees are actively foraging.

PHYSICAL OR CHEMICAL HAZARDS

Do not use water-based sprays of Barricor SP in conduits, motor housings, junction boxes, switch boxes, or other electrical equipment because of possible shock hazard.

CONDITIONS OF SALE AND LIMITATIONS OF WARRANTY AND LIABILITY

Read the entire Directions for Use, Conditions, Disclaimer of Warranties and Limitations of Liability before using this product. If terms are not acceptable, return the unopened product container at once.

By using this product, user or buyer accepts the following Conditions, Disclaimer of Warranties and Limitations of Liability.

CONDITIONS: The directions for use of this product are believed to be adequate and must be followed carefully. However, it is impossible to eliminate all risks associated with the use of this product. Plant injury, ineffectiveness or other unintended consequences may result because of such factors as weather conditions, presence of other materials, or the manner of use or application, all of which are beyond the control of Bayer CropScience. To the extent consistent with applicable law, all such risks shall be assumed by the user or buyer.

DISCLAIMER OF WARRANTIES: TO THE EXTENT CONSISTENT WITH APPLICABLE LAW, BAYER CROPSCIENCE MAKES NO OTHER WARRANTIES, EXPRESS OR IMPLIED, OF MERCHANTABILITY OR OF FITNESS FOR A PARTICULAR PURPOSE OR OTHERWISE, THAT EXTEND BEYOND THE STATEMENTS MADE ON THIS LABEL. No agent of Bayer CropScience is authorized to make any warranties beyond those contained herein or to modify the warranties contained herein. TO THE EXTENT CONSISTENT WITH APPLICABLE LAW, BAYER CROPSCIENCE DISCLAIMS ANY LIABILITY WHATSOEVER FOR SPECIAL, INCIDENTAL OR CONSEQUENTIAL DAMAGES RESULTING FROM THE USE OR HANDLING OF THIS PRODUCT.

LIMITATIONS OF LIABILITY: TO THE EXTENT CONSISTENT WITH APPLICABLE LAW, THE EXCLUSIVE REMEDY OF THE USER OR BUYER FOR ANY AND ALL LOSSES, INJURIES OR DAMAGES RESULTING FROM THE USE OR HANDLING OF

THIS PRODUCT, WHETHER IN CONTRACT, WARRANTY, TORT, NEGLIGENCE, STRICT LIABILITY OR OTHERWISE, SHALL NOT EXCEED THE PURCHASE PRICE PAID, OR AT BAYER CROPSCIENCE'S ELECTION, THE REPLACEMENT OF PRODUCT.

PRODUCT FACTS

KILLS

Public Health Pests Indoors; Ants (except Pharaoh, Fire, and Harvester), Carpenter Ants, Cockroaches, House flies, and Spiders.

Public Health Pests Outdoors; American cockroaches, Ants (except Pharaoh), Carpenter Ants, Fire ants, Harvester ants, House flies, and Turkestan cockroaches.

Other Pests; Angoumois Grain Moths, Aphids, Armyworms, Asian Lady Beetles, Bagworms, Bark Beetles, Beetles, Billbugs (adults), Boxelder Bugs, Brown Marmorated Stinkbugs, Carpenter Bees, Carpet Beetles, Caterpillars, Chinch Bugs, Cigarette Beetles, Clothes Moths, Clover Mites, Confused Flour Beetles, Crickets, Cutworms, Darkling Beetles, Dermestids, Drugstore Beetles, Earwigs, Elm Leaf Beetles, Firebrats, Flour Beetles, Foreign Grain Beetles, Fruit Flies, Fungus Gnats, Granary weevil, Grasshoppers, Ground Beetles, Hairy Fungus Beetle, Harvester Ants, Hide Beetles, Indian Meal Moths, Japanese Beetles (adults), Kudzu Bugs, Lace Bugs, Leather Beetles, Lesser Grain Borers, Litter Beetles, Loopers, Mealy Bugs, Mediterranean Flour Moths, Merchant Grain Beetles, Millipedes, Moths, Phorid Flies, Pillbugs, Plant Bugs, Red Flour Beetles, Rice Weevils, Sawtoothed Grain Beetles, Scale Insects, Sciarid Flies, Silverfish, Sod Webworms, Sowbugs, Springtails, Tent Caterpillars, Thrips, and Warehouse Beetles

FOR USE IN AND AROUND

Commercial, Industrial, Institutional, and Residential Areas, and Buildings [Agricultural Buildings; Airports; Animal Confinement Buildings and Pens; Apartments; Bakeries; Bottling Facilities; Breweries; Cafeterias; Calf Hutches; Calving Pens and Parlors; Campgrounds; Candy Plants; Cereal Processing and Manufacturing Plants; Chicken Houses (empty); Churches; Commercial Buildings; Convenience Stores; Correctional Facilities; Cruise Ships; Dairies and Dairy Product Processing Plants; Day Care Centers; Egg Laying Facilities; Food Handling Facilities; Food Manufacturing Plants; Food Processing Plants; Food Service Establishments; Food Storage Areas; Food Trucks; Food Vendors; Frozen Food Plants; Garbage Receptacles and Corrals; Grain Bins; Grain Mills; Granaries; Greenhouses (structures only); Health Care Facilities; Hog Barns; Homes; Horse Barns and Arenas; Hospitals; Hotels; Industrial Buildings; Kitchens; Laboratories; Landscapes; Lawns; Libraries; Livestock Housing; Malls; Manufacturing Establishments; Mausoleums; Meat, Poultry, and Egg Processing and Packaging Plants; Packing Plants; Meat and Produce Canneries; Milkrooms; Motels; Museums; Nursing Homes; Offices; Ornamental Plants; Outbuildings; Outdoor Living Areas; Animal Boarding Facilities; Pickle Factories; Poultry Houses; Rabbit Hutches; Recreational Areas; Resorts; Restaurants and other Food Handling Establishments; Schools; Sheds; Spice Plants; Stores; Supermarkets; Terminals; Theme Parks; Trailers; Transportation Equipment (Aircrafts – cargo areas only Automobiles, Buses, Boats, Marine Vessels, Mobile and Motor homes, Rail Cars, Ships, Trains, and Trucks); Utilities; Washrooms; Warehouses; and Wineries]

WHERE TO APPLY

- Apply in areas that may be conducive for pest activity or where pests have been observed or can find shelter
- In and around buildings and structures
- On residential, commercial and recreational areas of turf
- On ornamentals in landscapes and interior plantscapes

DILUTION RATES

DILUTION RATES % of Deltamethrin	Fl oz product / gallon	Recommendation
0.002%	0.125	Low pest pressure, kills pests contacted by spray
0.005%	0.25	Maintenance treatments or below pests*
0.015%	0.75	Initial service, clean out treatment, or the below pests**
0.03%	1.5	Severe pest infestation or hard to kill pests***

* House flies

** Harvester ants, webbing spiders, Turkestan cockroaches, and American and German cockroaches (indoors)

*** Carpet beetles and American cockroaches (outdoors)

MIXING INFORMATION

- This product is intended to be mixed with water and applied with hand pressurized or power operated sprayers.
- Shake this product well before measuring concentrate for dilution in water.
- Mix the appropriate amount of this product with water.
- Thoroughly shake, agitate, or invert sprayer to insure proper suspension.
- If spraying is interrupted when using a back-pack or hand-held sprayer, invert sprayer to re-suspend the dilution before starting to make applications.
- Diluted spray mixture can be stored overnight, but agitate well before using.
- If spray screens are used, they should be 50 mesh or larger.

RE-APPLY

Treatments may be applied at 21-day intervals or less frequently as necessary to maintain adequate control.

RE-ENTRY

- Do not allow people, animals, or pets to contact treated areas until dry.

QUESTIONS

For questions or comments, call toll-free 1-800-331-2867

DIRECTIONS FOR USE

It is a violation of federal law to use this product in a manner inconsistent with its labeling.

Not for use on turf being grown for sale or other commercial use as sod, or for commercial seed production, or for research purposes.

TANK MIXING

This product may be tank-mixed with other registered pesticides unless expressly prohibited by the product label. A small volume mixing test with other products is recommended to ensure compatibility. Observe all restrictions and precautions which appear on the labels of these products.

INDOOR PESTS

Use this product to kill listed indoor pests by application as a general surface treatment (including broadcast spray to floors, carpet or floor coverings), spot treatment, crack and crevices treatment, or void injection by spray, mist, or foam (including applications into floor drains).

WHERE TO APPLY

Apply in areas that may be conducive for pest activity or where pests have been observed or can find shelter. Use general surface, spot, mist, or crack and crevice applications.

Treat areas where pests normally feed, hide, or travel, such as floor-wall junctions, corners, around water pipes, behind and under refrigerators, cabinets, sinks and stoves.

This product can be applied to walls, floors, ceilings, in and around cabinets, between, behind and beneath equipment and appliances, around floor drains, window and door frames and around plumbing, sinks and other possible pest harborage sites.

Treat entry points around water pipes, utility penetrations, windows, doors, vents, and eaves.

Void applications can be made behind veneers, piers, and chimney bases, into rubble foundations, into block voids and structural voids, wall voids, under slabs, stoops, porches, or to the soil in crawlspaces, and other similar voids.

Treat floors, floor coverings, carpets, or rugs for carpet beetles.

HOW TO APPLY (Also see: APPLICATION FOR INDOOR PESTS)

Spot Applications

Perform a low pressure application with a fan-type nozzle to uniformly apply spot treatments in and around cupboards, and beneath, between and behind equipment or appliances.

Spray, Mist, Foam, Crack and Crevice or Void Applications

Spray, mist, or foam directly into cracks and crevice or voids where pests have been observed or can find shelter.

- Spray: Perform a low pressure application with a pin-point or variable pattern nozzle to areas such as floors, cracks and crevices in and around floor-wall junctions, walls, expansion joints, areas around water and sewer pipes or utility penetrations, and voids created by equipment and appliances.

- **Mist:** Use appropriate mist generating equipment. Do not allow mist to drift out of void spaces into commonly occupied areas of structure.
- **Foam:** Use foam to treat structural voids and kill pests in walls, under slabs or other void areas. Using appropriate foam generating equipment, mix dilution with manufacturers specified volume of foaming agent and apply sufficient volume of foam.

APPLICATION RESTRICTIONS

- Do not apply as a space spray.
- All food processing surfaces and utensils should be covered before treatment or thoroughly washed following treatment.
- Remove or tightly cover fish tanks and disconnect aerators during application.
- Do not apply in areas when occupied by people or animals.
- In the home, do not allow spray to contact food/feed surfaces. If it does, clean surfaces with soap and water.

APPLICATION FOR INDOOR PESTS

Listed crawling pests

Perform a low pressure spot, void, or crack and crevice application to areas that these pests normally inhabit. Focus on dark corners of rooms and closets; floor drains; cracks and crevices in walls; along and behind floor-wall junctions; beneath and behind sinks, stoves, refrigerators, and cabinets; around plumbing and other utility installations; doors, window frames and in attics and crawl spaces. Spot applications may be made to floor surfaces along floor-wall junctions and around air ducts. Do not let people or pets contact treated surfaces until dry. For ants, apply to trails, around doors and window frames or areas where ants inhabit or may enter premises. For brown recluse spiders, spray them directly.

Listed flying pests

Apply directly to walls, ceilings, window screens and other resting areas as a surface treatment. May be used inside residential buildings, as well as in and around carports, garages, storage sheds, unoccupied barns, stables, or Animal Boarding Facilities.

Pantry Pests

To kill adult and accessible immature stages of insects such as lesser grain borers, grain weevils, flour beetles, saw-toothed grain beetles, cigarette beetles, merchant grain beetles, Angoumois grain moths, Mediterranean flour moths, and Indian meal moths: Make applications to cupboards, shelving and storage areas. Remove all foodstuffs, all utensils, and other objects before spraying. Do not replace foodstuffs, utensils or other items or treated surfaces until dry. Any foodstuff accidentally contaminated with any spray solution must be discarded.

Carpet Beetles

Thoroughly apply as a fine broadcast spray to infested rugs, carpets, and pet resting areas. Prior to treatment, cover aquariums and fish bowls and disconnect aerators during application and remove pet animals from the area being treated. Do not permit humans or pets to contact treated surfaces until spray has dried. **DO NOT SPRAY PETS WITH THIS PRODUCT.**

When these pests are found in upholstered furniture, apply to the infested tufts, seams, folds and edges, and under cushions, but do not make broadcast applications to flat surfaces where prolonged human or pet contact will occur.

Pests in Livestock Housing Structures such as Horse Stables, Dairy Barns, Hog Farms, Poultry Houses, & Animal Boarding Facilities

In and around these structures, apply as a general surface, spot, and/or crack and crevice spray. Apply only to areas of facility where animals are not present. Do not allow re-entry of animals into treated areas until spray has dried. Do not apply to animal feed or watering equipment. Do NOT treat pets or livestock with this product.

Food/Feed Handling Establishments

For all labeled pests, applications are permitted in food/feed and non-food/non-feed areas of food/feed handling and processing establishments as a general surface, spot, void, or crack and crevice treatment on non-porous surfaces for cockroaches, black widows, and carpenter ants.

Food/Feed handling establishments are defined as places other than private residences in which exposed food/feed is held, processed, prepared, or served. Included also are areas for receiving, storing, packing (canning, bottling, wrapping, boxing), preparing, edible waste storage and enclosed processing systems (mills, dairies, edible oils, syrups) of food/feed. Serving areas where food/feed is exposed and the facility is in operation are also considered food/feed areas.

Non-Food/Non-Feed Areas: Examples of non-food/non-feed areas include garbage rooms, lavatories, floor drains (to sewers), entries and vestibules, offices, locker rooms, machine rooms, boiler rooms, mop closets and storage (after packaging, canning or bottling). All areas that insects inhabit or through which insects may enter should be treated.

General Surface Applications: Do not apply directly to food/feed products. Cover or remove all food/feed processing and/or handling equipment during application. **Spot or crack and crevice Applications:** Except in federally inspected meat and poultry plants, spot or crack and crevice applications may be made while the facility is in operation provided exposed food is covered or removed from area being treated prior to application. Do not apply directly to food or food-handling surfaces.

Commercial Stored Product Pests

Apply finished spray to equipment, wall and floor surfaces of grain bins, warehouses, production facilities, storage areas, rail cars, truck beds, and other areas where products are stored at the rate of 1 gal per 1000 sq ft prior to storing or handling grain. Application should be made only after equipment bins and buildings have been thoroughly cleaned.

To help prevent infestation of these structures, apply product as a perimeter treatment where pests are active and may find entrance. It is recommended to treat a band of soil or lawn up to 10 feet wide around and adjacent to structures and treat the foundation to a height of 2 to 3 feet. Apply as a coarse spray at a rate of 1 gal per 1000 sq ft. Thoroughly and uniformly wet the barrier area but do not allow run-off to occur.

OUTDOOR/PERIMETER PESTS

Use this product for outdoor pests by application as a perimeter treatment, spray or broadcast application to exterior surfaces of buildings, lawns, grounds, and ornamental plantings.

WHERE TO APPLY

- Apply to surfaces on buildings, porches, patios, and other structures, around doors and windows, eaves and attic vents, utility entry points, soffit areas, and other exterior openings (including foundation cracks or drilled holes) where these pests enter the structure or where they have been seen or found, or can find shelter.
- To prevent or to kill infestations outdoors, treat the outside of the structure, to include walls (to a height of 2 to 3 feet), around doors, windows, and soffits where pests are active or may enter or hide. Treat the soil, turf, or other non-flowering ground covering adjacent to the structure (in a band up to 10 feet wide) and wherever pests are seen, have been found, or can find shelter.
- In ant management programs (except pharaoh), apply to shrubs or ornamental plant beds, and where ants may find food or forage. Apply to Carpenter Ants directly, and for Fire and Harvester ants apply as a mound drench.
- For Fire and Harvester ants treat mounds wherever they occur.
- In occasional invader management programs, apply to trees, shrubs, or ornamental plant beds.

USE RATE

0.125 fl oz (3.75 ml) per 1,000 sq ft of surface or 1 gal

0.25 fl oz (7.5 ml) per 1,000 sq ft of surface or 1 gal

0.75 fl oz (22.7 ml) per 1,000 sq ft of surface or 1 gal

1.5 fl oz (45.4 ml) per 1,000 sq ft of surface or 1 gal

HOW TO APPLY (Also see: APPLICATIONS FOR OUTDOOR/ PERIMETER PESTS)

Apply as a coarse low pressure spray at the rate of 0.125 to 1.5 fl oz of this product per 1,000 sq ft of surfaces. Apply in a sufficient volume of water to provide adequate coverage but do not allow run-off to occur.

High Volume Applications: Adjust the rate of product dilution when performing high volume applications to ensure the correct amount of the product (see Use Rate section above) is applied per 1,000 sq ft of treated surface. For example, mixing 12.5 fl oz of this product in a 50 gal tank, while using an application volume of 3.0 gals per 1,000 sq ft, will apply 0.75 fl oz of this product per 1,000 sq ft. The table below gives examples of end use dilutions for typical power spraying application volumes.

DILUTION RATE CHART

Fluid Ounces Of This Product For A Given Tank Volume				
Fl.oz. / 1,000 sq ft	25 gallons	50 gallons	100 gallons	% Deltamethrin
0.125	1	2	4	0.0008%
0.25	2	4	8	0.0015%
0.75	6.25	12.5	25	0.0048%
1.5	12.5	25	50	0.0096%

*Based on spray volume of 3 gallons per 1000 sq ft. Three typical industry tank volumes are used in the calculations above.

APPLICATION RESTRICTIONS

Do not water the treated area to the point of run-off.

Do not make applications during rain.

Do not apply directly to impervious horizontal surfaces such as sidewalks, driveways, and patios except as a spot, pin stream, or crack and crevice treatment. During application, do not allow pesticide to enter or run off into storm drains, drainage ditches, gutters, or surface waters.

All outdoor applications, if permitted elsewhere on this label, must be limited to spot, pin stream, or crack and crevice treatments only, except for the following permitted uses:

1. Applications to soil or vegetation, as listed on this label, around structures;
2. Applications to lawns, turf, and other vegetation, as listed on this label;
3. Applications to the side of a building, up to a maximum height of 3 feet above grade;
4. Applications to underside of eaves, soffits, doors, or windows permanently protected from rainfall by a covering, overhang, awning, or other structure;
5. Applications around potential pest entry points into buildings, when limited to a surface band not to exceed one inch in width;
6. Applications made through the use of a coarse, low pressure spray to only those portions of surfaces that are directly above bare soil, lawn, turf, mulch or other vegetation, as listed on this label, and not over an impervious surface, drainage or other condition that could result in runoff into storm drains, drainage ditches, gutters, or surface waters, in order to kill occasional invaders or aggregating pests. Application is prohibited directly into sewers or drains, or to any area like a gutter where drainage to sewers, storm drains, water bodies, or aquatic habitat can occur. Do not allow the product to enter any drain during or after application.

APPLICATION FOR OUTDOOR/PERIMETER PESTS

Ants (except Pharaoh), American and Turkestan cockroaches and Other Listed Crawling Pests

Apply as a spray and/or perimeter treatment around the infested structure as described above. Spray Carpenter ants directly.

Locate and treat ant nests if possible. Follow trails of foraging worker ants and inspect for likely nest sites. If ants are nesting in soil, drench or inject the nest and surrounding soil.

Foliar applications to landscape ornamentals will kill aphids, scale insects, and other plant-sucking insects and limit the production of honeydew (an important food source for ant populations). Apply a light mist of the dilute spray, and do not allow excess run-off. Treat thoroughly for good coverage, including the underside of leaves.

Fire Ants and Harvester Ants

Apply as a mound drench. At a minimum, dilute 0.25 fl oz in 1 gallon of water. For harvester ants, at a minimum prepare 2 gallons of the same dilution and apply. Apply as a mound drench over the surface of each mound and surrounding area to a 10-foot diameter.

Occasional invaders including multi-colored Asian lady beetle, boxelder bug, brown marmorated stink bug, and elm leaf beetle

Apply directly to insects that have congregated around doors, window frames, and similar areas where they may enter the structure. Apply a perimeter treatment as described above.

Treat trees and shrubs infested with boxelder bugs, elm leaf beetles, and other occasional invading species early in the season.

Millipedes, pill bugs, sow bugs, springtails

Apply perimeter treatment to reduce the number of insects entering the structure. Thoroughly treat mulched areas.

House flies

Apply low pressure mist or spray to outside of surfaces of buildings, porches, patios, garages, fences, and other areas where house flies rest. Use the 0.25 fl oz rate or higher.

Carpenter bees

Apply as a spray or mist, or sufficient volume of foam, directly into gallery entrance holes. Leave entrance open to be sure that returning adult bees are killed. When there is no longer any insect activity, the entrance hole may be sealed with a suitable sealant.

Exterior wood surfaces may be treated by general surface application to prevent nest cavity excavation by adult carpenter bees.

STORAGE AND DISPOSAL

Do not contaminate water, food, or feed by storage or disposal.

PESTICIDE STORAGE

Mix as needed. Store in original container in a secured dry storage area. Avoid extremes in temperatures. Prevent cross contamination with other pesticides and fertilizers. If the container is leaking and/or material is spilled on floor or paved surfaces, absorb on sawdust or other commercially available absorbing material, sweep up and remove to chemical waste area for your disposal. Concentrate is stable at normal storage temperatures.

PESTICIDE DISPOSAL

Wastes resulting from the use of this product may be disposed of on site or at an approved waste disposal facility.

CONTAINER HANDLING

[less than one gallon]

Nonrefillable container. Do not reuse or refill this container. Offer for recycling, if available. Triple rinse container (or equivalent) promptly after emptying. Triple rinse as follows: Empty the remaining contents into application equipment or a mix tank and drain for 10 seconds after the flow begins to drip. Fill the container ¼ full with water and recap. Shake for 10 seconds. Pour rinsate into application equipment or a mix tank or store rinsate for later use or disposal. Drain for 10 seconds after the flow begins to drip. Repeat this procedure two more times. Securely wrap container in several layers of newspaper and discard in trash or offer for recycling if available. If partly filled: Call your local solid waste agency for disposal instructions. Never place unused product down any indoor or outdoor drain.

(continued)

STORAGE AND DISPOSAL *(continued)*

[One to 5 gallon size]

Nonrefillable container. Do not reuse or refill this container. Offer for recycling, if available. Triple rinse container (or equivalent) promptly after emptying. Triple rinse as follows: Empty the remaining contents into application equipment or a mix tank and drain for 10 seconds after the flow begins to drip. Fill the container $\frac{1}{4}$ full with water and recap. Shake for 10 seconds. Pour rinsate into application equipment or a mix tank or store rinsate for later use or disposal. Drain for 10 seconds after the flow begins to drip. Repeat this procedure two more times. Offer for recycling or reconditioning, or puncture and dispose of in a sanitary landfill, or by incineration, or if allowed by State and local authorities, by burning. If burned, stay out of smoke. If partly filled: Call your local solid waste agency for disposal instructions. Never place unused product down any indoor or outdoor drain.

Rigid Non-refillable Containers that are too large to shake (i.e., with capacities greater than 5 gallons or 50 pounds)

Non-refillable container. Do not reuse or refill this container. Triple rinse or pressure rinse container (or equivalent) promptly after emptying. Triple rinse as follows: Empty the remaining contents into application equipment or a mix tank. Fill the container $\frac{1}{4}$ full with water. Replace and tighten closures. Tip container on its side and roll it back and forth, ensuring at least one complete revolution, for 30 seconds. Stand the container on its end and tip it back and forth several times. Empty the rinsate into application equipment or a mix tank or store rinsate for later use or disposal. Repeat this procedure two more times. Pressure rinse as follows: Empty the remaining contents into application equipment or a mix tank and continue to drain for 10 seconds after the flow begins to drip. Hold container upside down over application equipment or mix tank or collect rinsate for later use or disposal. Insert pressure rinsing nozzle in the side of the container, and rinse at about 40 PSI for at least 30 seconds. Drain for 10 seconds after the flow begins to drip. Then offer for recycling or reconditioning or puncture and dispose of in a sanitary landfill.

Bottom Discharge IBC (e.g. – Schuetz Caged IBC or Snyder Square Stackable)

Pressure rinsing the container before final disposal is the responsibility of the person disposing of the container. To pressure rinse the container before final disposal, empty the remaining contents from the IBC into application equipment or mix tank. Raise the bottom of the IBC by 1.5 inches on the side which is opposite of the bottom discharge valve to promote more complete product removal. Completely remove the top lid of the IBC. Use water pressurized to at least 40 PSI to rinse all interior portions. Continuously pump or drain rinsate into application equipment or rinsate collection system while pressure rinsing. Continue pressure rinsing for 2 minutes or until rinsate becomes clear. Replace the lid and close bottom valve.

Once container is rinsed, offer for recycling if available or puncture and dispose of in a sanitary landfill or by incineration.

(continued)

STORAGE AND DISPOSAL *(continued)*

Top Discharge IBC, Drums, Kegs (e.g. – Snyder 120 Next Gen, Bonar B120, Drums, Kegs)

Triple rinsing the container before final disposal is the responsibility of the person disposing of the container. To triple rinse the container before final disposal, empty the remaining contents from this container into application equipment or mix tank. Fill the container at least 10 percent full with water. Agitate vigorously or recirculate water with the pump for 2 minutes. Rinse all interior surfaces. Pour or pump rinsate into application equipment or rinsate collection system. Repeat this procedure two more times.

Once container is rinsed, offer for recycling if available or puncture and dispose of in a sanitary landfill or by incineration.

Refillable container.

Refill this container with pesticide only. Do not reuse this container for any other purpose. Cleaning the container before final disposal is the responsibility of the person disposing of the container. Cleaning before refilling is the responsibility of the refiller. To clean the container before final disposal, empty the remaining contents from this container into application equipment or mix tank. Fill the container about 10 percent full with water. Agitate vigorously or recirculate water with the pump for 2 minutes. Pour or pump rinsate into application equipment or rinsate collection system. Repeat this rinsing procedure two more times. Then offer for recycling or reconditioning or puncture and dispose of in a sanitary landfill.

Bayer (reg'd), the Bayer Cross (reg'd) and Barricor™ are trademarks of Bayer.

Produced for:
Bayer Environmental Science
A Division of Bayer CropScience LP
5000 CentreGreen Way, Suite 400
Cary, NC 27513

Bayer

.625"

2.75"
Book Placement

.375"



BarricorTM SP

- Kills a broad spectrum of pests as listed
- Multiple dose rates can be used to address a variety of situations
- When used as directed will not damage paints, plastics, fabrics or other surfaces where water alone causes no damages
- New formulation technology category
- For use in food handling establishments

ACTIVE INGREDIENT:

Deltamethrin 2.45%

OTHER INGREDIENTS : 97.55%

TOTAL: 100.00%

Contains 0.21 pounds deltamethrin per gallon

EPA Reg. No. 432-1597

See Booklet for Complete Precautionary Statements and Directions for Use.

**KEEP OUT OF REACH OF
CHILDREN**

For MEDICAL and TRANSPORTATION Emergencies ONLY Call
24 Hours A Day 1-800-334-7577

For PRODUCT USE Information Call 1-800-331-2867



(01)00785740612217

Net Contents

32 Fl. Oz.

SKU# 86230747

8625596C 181119AV2

4.5"

3.75"