

Alesco is a cut flower and potted plant conditioner for use by the grower to avoid premature shrinking or dropping of buds or blooms and leaves. For use on standard spray carnation and other ethylene sensitive cut flowers such as Aconitum, Alstroemeria, Antirrhinum, Aquilegia, Asclepias, Bouvardia, aea, Campanula, Chaumelaucium, Cattleya hybride, Crocosmia, Delphinium, Dendrobium, Dianthus, Dicentra, Eremurus, Euphorbia fulgens, Freesia, Gladiolus, Gypsophila, Ixia, Brodiaea, Lathyrus, Lavatera, Lilium, Oncidium, Paphiopedilum, Phlox, Physostegia, Scabiosa, Silene, and Veronica. Also for use on ethylene sensitive potted plants like Campanula, Cyclamen, Dianthus, Ficus, Kalanchoe, Phalaenopsis, Rhipsalidopsis, Schlumbergera and Zygocactus.

PRECAUTIONARY STATEMENTS

HAZARDS TO HUMANS AND DOMESTIC ANIMALS

CAUTION: Harmful if swallowed or absorbed through skin. Avoid contact with skin, eyes or clothing. Wash thoroughly with soap and water after handling and before eating, drinking, chewing gum, using tobacco or using the toilet.

BATCH NO.

SOLD BY Chrysal International BV

Goolmeer 7, 1411 DD Naarden,
the Netherlands
www.chrysal.com

ALESCO

ANTI-ETHYLENE TREATMENT

post-harvest conditioner for ethylene sensitive cut flowers and potted plants

ACTIVE INGREDIENT:
Silver Nitrate 2.83%
INERT INGREDIENTS: 97.17%
TOTAL: 100.00%

KEEP OUT OF REACH OF CHILDREN
CAUTION

See back panel for First Aid statement

EPA Registration No. 72992-1
EPA Establishment No. 72992-COL-001

NET 200 ML / 6.76 FL. OZ

CHRYSAL

FLOWER & PLANT CARE

FIRST AID	
If swallowed	<ul style="list-style-type: none"> Call a poison center or doctor immediately for treatment advice. Have person sip a glass of water if able to swallow. Do not induce vomiting unless told to do so by the poison center or doctor. Do not give anything to an unconscious person.
If on skin or clothing	<ul style="list-style-type: none"> Take off contaminated clothing. Rinse skin immediately with plenty of water for 15-20 minutes. Call a poison control center or doctor for treatment advice.
If inhaled	<ul style="list-style-type: none"> Move person to fresh air. If person is not breathing, call 911 or an ambulance, then give artificial respiration, preferably by mouth-to-mouth, if possible. Call a poison control center or doctor for further treatment advice.
In case of an emergency call 1.800.255.3924. Have the product container or label with you when calling a poison control center or doctor, or going for treatment	

60.00 mm

E0039150

Alesco Conditioner for ethylene sensitive cut flowers and potted plants. Conditioner for carnation, lily and other ethylene sensitive cut flowers and potted plants.

This product is for preventing the formation of ethylene by cut flowers and potted plants to avoid premature shrinking or dropping of buds, blooms and leaves. It also protects cut flowers and potted plants from external ethylene gas. Cut flowers and potted plants treated with Alesco generally achieve a significantly longer shelf life.

PERSONAL PROTECTIVE EQUIPMENT (PPE): To prevent contact, workers mixing solution and handling treated flowers and potted plants must wear waterproof gloves, covering hands, wrists and lower forearms, waterproof apron, long-sleeved shirt and long pants, socks and shoes. Follow the manufacturer's instructions for cleaning/maintaining PPE. If no such instructions for washables, use detergent and hot water. Keep and wash PPE separately from other laundry.

USER SAFETY RECOMMENDATIONS: Users should remove clothing/PPE immediately if pesticide gets inside. Then wash thoroughly and put on clean clothing.

ENVIRONMENTAL HAZARDS: Do not contaminate water when disposing of equipment wash waters. This product is toxic to fish and aquatic invertebrates.

For any requirements specific to your State or Tribe, consult the State or Tribal agency responsible for pesticide regulation. Do not apply this product in a way that will contact

workers or other persons, either directly or through drift. Only protected handlers may be in the area during application.

AGRICULTURAL USE REQUIREMENTS

Use this product only in accordance with its labeling and with the Worker Protection Standard, 40 CFR Part 170. This Standard contains requirements for the protection of agricultural workers on farms, forests, nurseries and greenhouses, and handlers of agricultural pesticides.

It contains requirements for training, decontamination, notification and emergency assistance. It also contains specific instructions and exceptions pertaining to the statements on this label about personal protective equipment (PPE), restricted-entry interval, and notification to workers. The requirements in this box apply only to users of this product that are covered by the Worker Protection Standard.

Do not enter or allow worker entry into treated areas during the restricted-entry interval (REI) of 4 hours.

For early entry into treated areas that is permitted under the Worker Protection Standard and that involves contact with anything that has been treated, such as plants, soil, or water, wear:

- coveralls
- waterproof gloves
- shoes plus socks

NON-AGRICULTURAL USE REQUIREMENTS: The requirements in this box apply to uses of this product that are NOT within the scope of the Worker Protection Standard for agricultural pesticides (40 CFR Part 170). The WPS applies when this product is used to produce agricultural plants on farms, forests, nurseries, or greenhouses.

DIRECTIONS FOR USE

It is a violation of Federal law to use this product in a manner inconsistent with its labeling.

The following directions must always be followed:

1. Mix 0.5 ml (Alstroemeria, Euphorbia fulgens) or 1 ml (other cut flowers and potted plants) of solution per quart of water in a non-metallic container or mix and dispense Alesco using dosing system (CDU). When dosing 1 ml per liter, set CDU at 1000 to 1 setting. Dispense into a non-metallic container.

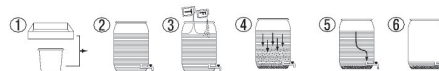
2. **Cut Flowers:** Place cut flowers in prepared solution immediately after cutting for a minimum of 4 hours and a maximum of 72 hours. Lilies must be treated for a minimum of 4 hours and a maximum of 36 hours. Collect excess and spilled Alesco solution in a container and follow the disposal directions or the procedure to recover the silver from the solution.

Potted Plants: Spray potted plants until run-off just prior to shipment. For optimal results an additional spray may be applied 8 to 14 days prior to shipment. It is advised to perform the treatment at the end of the day while avoiding direct sunlight. Spray directly on the leaves, buds and flowers of potted plants. Avoid excess spray and spraying onto soils or other substrates. Collect excess spray and spilled Alesco solution in a container and follow the disposal directions or the procedure to recover

Procedure to Recover Silver from Solution

Excess Alesco solution and rinsate can be treated to recover residual silver, when done in accordance with Federal, State and local requirements. Treatment can be accomplished with the enclosed neutralization material using the following procedure:

- Put the residual Alesco solution in a container used exclusively for the treatment process (see pictures 1 and 2 below). The drain cock and new drain pipe should be positioned in such a way that the contents of the container can be removed without disturbing the deposit (=silver);
- Add the contents of one sachet of Chrysal Tecitine and one sachet of Chrysal Flocculine to each 150 liters/159 quarts of residual solution and stir (see picture 3 below);
- Let the residual solution react with the neutralizing powder for 120 hours. A grey-black deposit will be formed at the bottom (see picture 4 below);
- Drain off the water above the drainpipe level (see picture 5 below). Contact your State Pesticide or Environmental Control Agency or the Hazardous Waste representative at the nearest EPA Regional Office for guidance on disposing of this drainage water;
- Do not drain off the remainder of the water and silt. Send the remaining water and silt to a facility that is authorized to recycle silver (see picture 6 below).



Warranty Statement

IMPORTANT: WARRANTY AND DISCLAIMER INFORMATION

Chrysal International BV warrants that the product conforms to its chemical description and is reasonably fit for the purposes stated in this label when used in accordance with directions under normal conditions of use; but to the extent consistent with applicable law this warranty of fitness for a particular purpose does not extend to the use of this product contrary to label instructions, or under abnormal conditions, or under conditions not reasonably foreseeable to seller, and buyer assumes the risk of any such use.

CHRYSAL INTERNATIONAL BV SPECIFICALLY DISCLAIMS ANY OTHER EXPRESS OR IMPLIED WARRANTY, INCLUDING THE WARRANTY OF MERCHANTABILITY.

4 mm

4 mm

4 mm

5 mm

4 mm

4 mm

4 mm

4 mm

4 mm