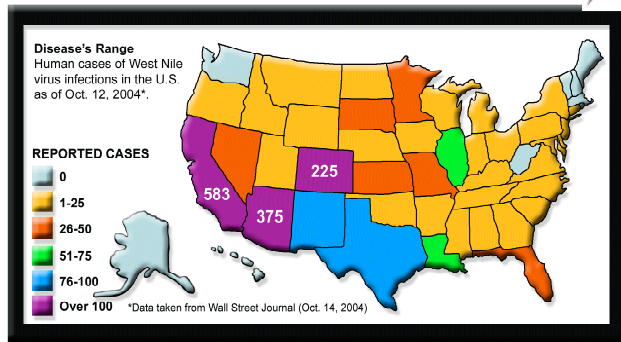


## Mosquito Borne Disease Control is a Global Mandate

First Watch can be used as a primary agent in controlling mosquito populations in all urban, natural and landscaped standing water habitats. As a fundamental disease control strategy, it is more efficient and economical to control immature mosquitoes when they are confined and concentrated in number, than after they become adults that are dispersed over a large area.

First Watch is a 21st century tool in our continued fight against the public health outbreaks of West Nile Virus and other mosquito-borne diseases.



## Spectrum and Rate of Activity

First Watch mosquito larvicide and pupicide is effective on all species of mosquitoes and chironomid midges that breed in standing water and require the air/water interface in their life cycle.

For most mosquito species, larval and pupal stages will be controlled within 72 hours. The rate of kill will be slower if water temperatures are cold or for species that don't require as much oxygen. The film persistence of First Watch, coupled with its ability to drown emerging adults, will ensure successful control even with these difficult species and/or under these difficult conditions.

First Watch also successfully controls chironomid midges, and mosquitoes that have minimal surface contact. These treatments will target the emerging adult lifestage. For midge control, reapplication of FirstWatch is recommended every two weeks during the midge season to ensure continuous control.

## Abandoned "Ghost Lake" Abuzz With More Rumors Than Mosquitoes

Larvae, Pupae Strangely Absent From Water.



**Soggy Bogg**- "Where have all the youngsters gone?" This is the key question on the minds and the mandibles of a dwindling mosquito community that once flourished at this water hazard. Few larvae and pupae have emerged this season, fueling rumors of an alleged film on the lake's surface. Unseen and unsmelled, the film is nonetheless suspected of breaking the surface tension and disrupting the air/water interchange of developing mosquitoes.

The "phantom film" has also been implicated in the deaths of adult mosquitoes. Identifying himself only as "an old-timer," one eyewitness related this harrowing account: "I was sitting on a cattail when here comes [fellow mosquito] Ernie, flying around the lake. I flew over to wave him in for a landing, but instead of alighting on the surface, he just kept going right on down, into the drink. Poor son of a gun." Blinking back a tear, he added in a hushed vice, "The Phantom got him."

Since then, even more have fallen prey to the Phantom. "I don't see very many eggs getting fertilized this year. Youngsters will be even more scarce next season, I tell you what."

### Available in Two Package Sizes

12 x 1 Quart Spray Bottles  
and 2 x 2.5 Gallon Jugs



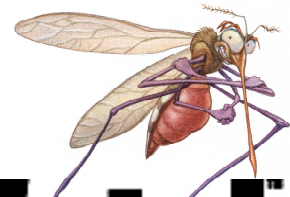
First Watch is a trademark of KALO, Inc.



KALO, Inc.  
13200 Metcalf Ave., Suite 370  
Overland Park, KS 66213  
www.kalo.com



**KALO**



# First Watch

LARVICIDE PUPICIDE





